

ADDENDUM No. 04

DATE: March 24, 2022

PROJECT: C22-01 SAVANNAH ARTS ACADEMY ADDITION & RENOVATION
SAVANNAH-CHATHAM COUNTY PUBLIC SCHOOL SYSTEM, SAVANNAH, GA

BY: COGDELL & MENDRALA ARCHITECTS, PC (Architect)
517 East Congress Street
Savannah, GA 31401

This Addendum forms a part of the Contract Documents and modifies the original Drawings and Project Manual dated February 2022 and identified as (GMP Documents).

I. GENERAL INFORMATION:

A. Not applicable for Addendum No. 04.

II. SUBSTITUTION REQUESTS:

A. Not applicable for Addendum No. 04.

III. RFI RESPONSE:

A. AWP-1B wall Panel Type: Calls for these "Foundations Panels" to be on Classroom Walls. I don't see any on the drawings. Can you clarify or identify where they are?

1. Response: AWP-1B is not used

B. AWP-2A and 2B are called out as "Foundations", but they have a fabric facing. Foundations is a field paintable panel. These should either be standard A200 panels (2" Thick Standard) or IR 208 High Impact (2-1/8" Thick) Panels. Please correct.

1. Response: See Project Manual modifications per this addendum.

C. A5.03 shows Theater Side Walls. There is a callout for AWP-2C for some of the panels, but there is not an AWP-2C type in the specs. I think this may be AWP-2B, but please advise and clarify or correct as needed. See attached A5.03 Sheet with comments

1. Response: See Revised A5.03 per this addendum.

D. The Autex Baffles, if used in a rectangular shape are called Frontier "Tundra" baffles (not "Lattice"). Needs correction in the spec.

1. Response: See Project Manual modifications per this addendum.

E. Spec calls for "integrating light fixtures", which Autex does not do. If the lights are between the baffles, no problem. Need to clarify this.

1. Response: See Project Manual modifications per this addendum.

F. What is the thickness of the baffles? Typical thickness is either 1/2" or 1".

1. Response: Baffles are 1" Thick

G. What is the thickness of the baffles? Typical thickness is either 1/2" or 1"

1. Response: Baffles are 18" in Height (Vertical Depth).

IV. PROJECT MANUAL:

A. Section 09 51 13 ACOUSTICAL PANEL CEILINGS AND CLOUDS

1. In sub-paragraph 2.10.A.1.: Change 'Lattice' to 'Frontier "Tundra."'

2. In sub-paragraph 2.10.A.6.: Change 'integrating light fixtures' to 'coordinate with light fixtures hung between baffles.'

B. Section 09 84 33 SOUND AFFECTING WALL AND CEILING UNITS

1. In sub-paragraph 2.2.C.1.: Change 'Foundations Direct Attach Ceiling Panels' to 'A200.'

V. Drawings:

A. Vol I - RENOVATION:

1. Architectural:

- a. A5.03 – INTERIOR ELEVATIONS - AUDITORIUM: Replace this sheet entirely.

B. Vol II - ADDITION:

1. Electrical:

- a. EC0.02 – LIGHTING FIXTURE SCHEDULE & DETAILS: Replace this sheet entirely.

END OF ADDENDUM No. 04

C:\Users\eric.CMA.000\Documents\1916 SAA_RVT_2019_ARCH_emcmam2013.rvt 3/24/2022 4:49:11 PM

KEYNOTE LEGEND - BY SHEET

NO.	TEXT

GENERAL INTERIOR ELEVATION NOTES

- SEE FINISH SCHEDULE FOR ADDITIONAL INFORMATION ON WALL AND BASE FINISHES.
- FILLER PANELS (F) SHALL BE EQUAL IN LENGTH AT CABINETS ADJACENT TO WALLS, AND MINIMUM 1'-0" AT LOCATIONS ADJACENT TO ADJOINING CABINETS.
- WHERE A NOTE/DETAIL IS SHOWN FOR ONE CONDITION IT SHALL APPLY TO ALL SIMILAR AND LIKE CONDITIONS, UNLESS NOTED OTHERWISE.

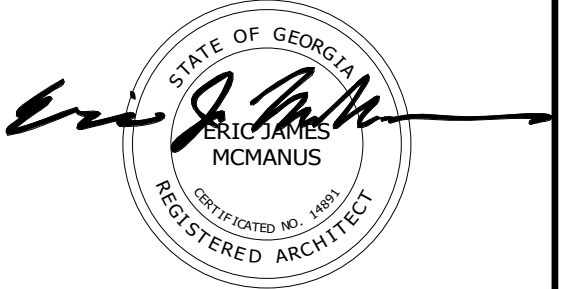
**VOL. I - SAVANNAH ARTS
ACADEMY RENOVATION**
500 WASHINGTON AVENUE
SAVANNAH, GEORGIA 31405
SAVANNAH-CHATHAM COUNTY PUBLIC SCHOOL SYSTEM
GMP CONSTRUCTION DOCUMENTS



FACILITY CODE: 1607
FTE: 1000
FUNDING: LOCAL EFFORT
BID NO#: C22-01

Cogdell Mendrala Architects
COGDELL & MENDRALA ARCHITECTS, PC
517 EAST CONGRESS STREET
SAVANNAH, GEORGIA 31401
tel 912.234.6318
fax 912.236.8414
cogdellmendrala.com

SEAL:



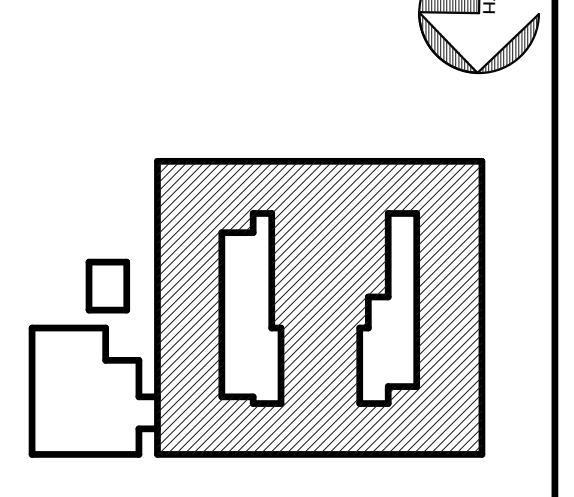
PROJECT CONSULTANTS:

CIVIL ENGINEER
**MAXWELL-REDDICK &
ASSOCIATES**
40 JOE KENNEDY BLVD.
STATESBORO, GA 30458

STRUCTURAL ENGINEER:
SAUSSY ENGINEERING
400 E. JOHNNY MERCER BOULEVARD
SAVANNAH, GA 31410

MECHANICAL & ELECTRICAL ENGINEER:
**DULOHERY WEEKS
ENGINEERS**
7402 HODGSON MEMORIAL DRIVE,
SUITE 100
SAVANNAH, GA 31406

KEY PLAN:

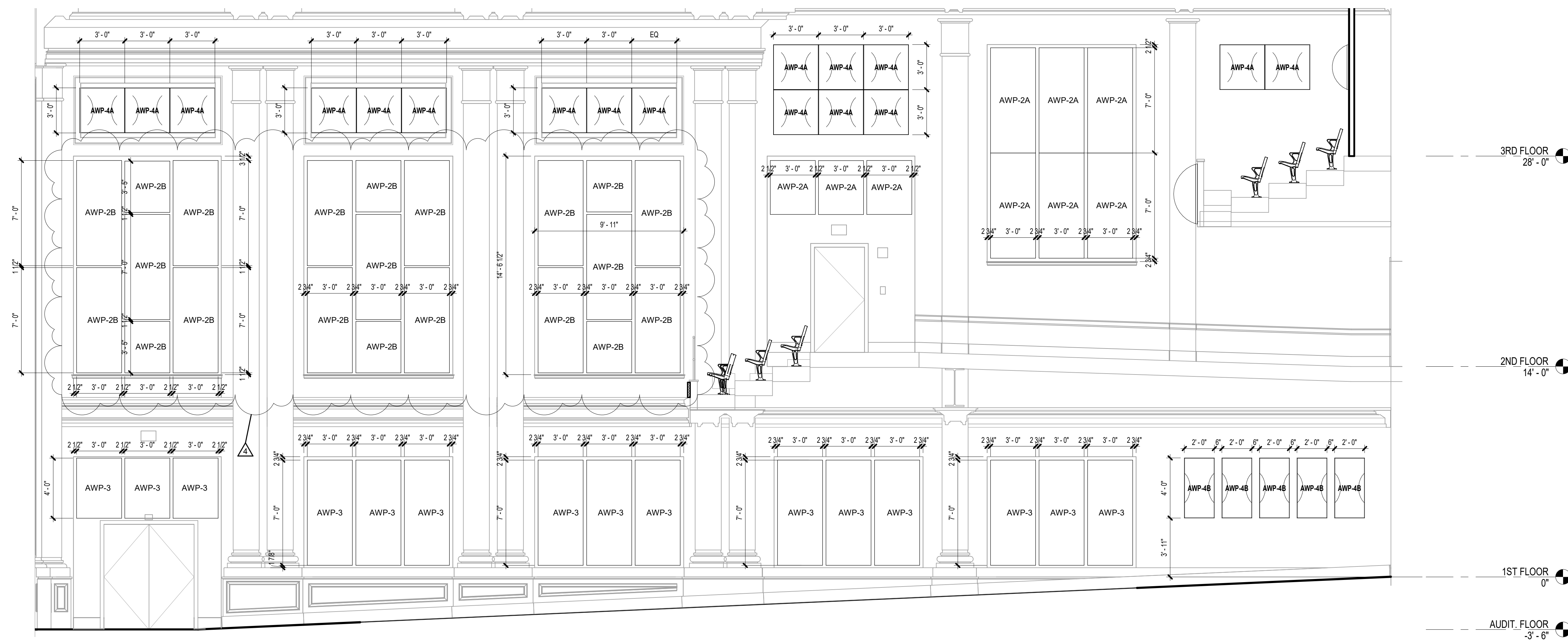


SHEET TITLE:
**INTERIOR
ELEVATIONS -
AUDITORIUM**

REVISION SCHEDULE

DATE	DESCRIPTION
3/24/2022	Addendum No. 4

PROJECT NO: 1916
DATE: FEB 2022
DRAWN BY: TLC
SCALE: 1/4" = 1'-0"
SHEET: **A5.03**

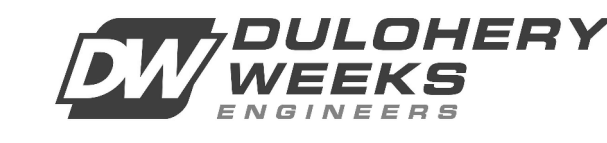
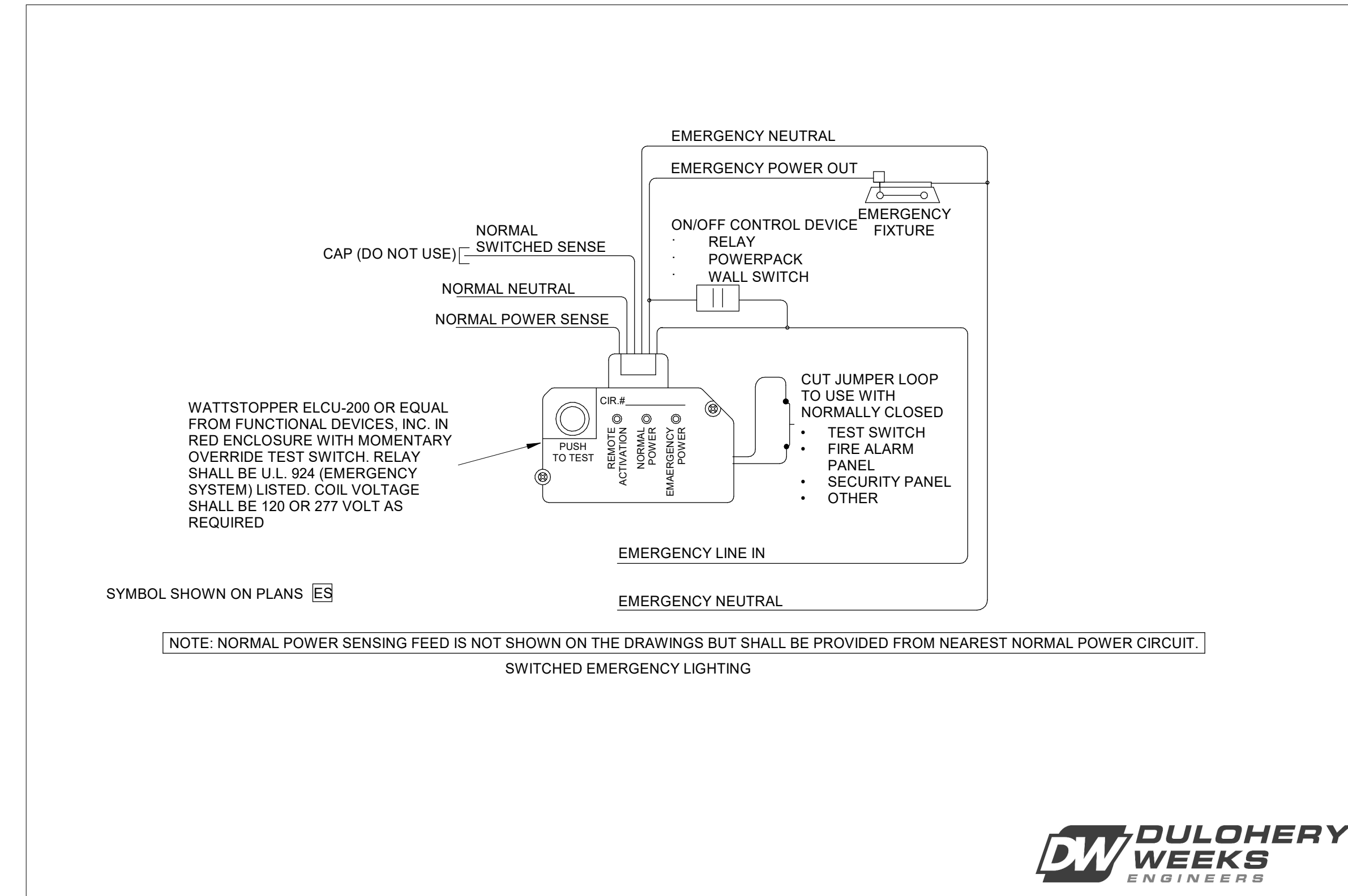


2 AUDITORIUM - EAST/WEST WALL

A5.03 1/4" = 1'-0"

LIGHTING FIXTURE SCHEDULE							
TYPE	DESCRIPTION	MANUFACTURER/SERIES	REFLECTOR/DIFFUSER	FINISH	MOUNTING	LAMPS	NOTES
A1	2'X4' FLAT PANEL	COLUMBIA CFP SERIES LITHONIA EPANL SERIES METALUX FPANEL SERIES CREE C-TR-C-PP SERIES	FROSTED ACRYLIC LENS	WHITE	RECESSED CEILING	LED: 5000 LUMENS, 3500K	
A2	2'X2' FLAT PANEL					LED: 4000 LUMENS, 3500K	
B1	2'X4' RECESSED INDIRECT/DIRECT	COLUMBIA LCAT SERIES LITHONIA BLT SERIES METALUX CRUZE SERIES CREE ZR SERIES	SMOOTH FROSTED ACRYLIC LENS	HOUSING AND EXPOSED PARTS - WHITE	RECESSED CEILING	LED: 4000 LUMENS, 3500K	
B2	2'X2' RECESSED INDIRECT/DIRECT					LED: 3000 LUMENS, 3500K	
C1	4' WIDE RECESSED LINEAR SLOT	LUMENWERX VIA4 SERIES MARK SLOT 4 SERIES NEORAY DIERNE SERIES LUXILLUMINAIRE EOS SERIES	SMOOTH FROSTED ACRYLIC LENS	BLACK	RECESSED CEILING	LED: 750 LPF DOWN 3500K	
C2						LED: 350 LPF DOWN 3500K	
E1	STRIP FIXTURE, 4 FOOT LENGTH, WITH LENS.	COLUMBIA MPS SERIES LITHONIA CLX SERIES METALUX SNLED SERIES CREE LS4C SERIES	SMOOTH FROSTED ACRYLIC LENS	HOUSING AND EXPOSED PARTS - WHITE	SURFACE	LED: 5000 LUMENS 3500K	
K1	6" DOWNLIGHT	ELITE HH6 SERIES LITHONIA LDN6 SERIES HALO HGR SERIES CREE SDL6 SERIES	OPEN SEMI-SPECULAR CLEAR ALZAK CONE. MEDIUM BEAM SPREAD.	RECESSED CEILING	RECESSED CEILING	LED: 1500 LUMENS 3500K	
K2	6" THIN FORM DOWNLIGHT	ELITE LIGHTING LED RL675 SERIES LITHONIA WFS SERIES HALO LCR6 SERIES GREEN CREATIVE THINFIT 6 SERIES	OPEN SEMI-SPECULAR CLEAR ALZAK CONE. MEDIUM BEAM SPREAD.	WHITE	RECESSED CEILING	LED: 2000 LUMENS 3500K	
N1	DECORATIVE EXTERIOR SCONCE	ALW OUBE 300 LX SERIES LUMICUBE 0735Q SERIES NLS TWL SERIES VOIGT PRAGMATIC SERIES OR PRIOR APPROVED EQUAL	GLOSS WHITE ACRYLIC	BY ARCHITECT	WALL-SURFACE	LED: 2000 LUMENS 4100K	
N2	EXTERIOR CANOPY LIGHT	LUMINAIRE ARV13 SERIES LITHONIA OLCFM SERIES FAIL-SAFE TR11 SERIES VOIGT VLS SERIES ECLIPSE EURO BULKHEAD SERIES	HEAVY GAUGE ALUMINUM, PRISMATIC POLYCARBONATE WITH MINIMUM 0.13" THICKNESS	BY ARCHITECT	WALL-SURFACE	LED: 1000 LUMENS 4100K	
P1	34" DRUM PENDANT	LUMETTA ACOUSTIC L2 DRUM SERIES LIGHTART EMPIRE SHADE SERIES LUXX BOX LX-VEC SERIES OR PRIOR APPROVED EQUAL	WHITE ACRYLIC COVER	BY ARCHITECT	FIELD CUTTABLE BALL SWIVEL STERN WITH 1.75" DEEP CANOPY. 96" AFF	LED: 4000 LUMENS 3500K	
P2	48" DRUM PENDANT	LUMETTA ACOUSTIC L2 DRUM SERIES LIGHTART EMPIRE SHADE SERIES LUXX BOX LX-VEC SERIES OR PRIOR APPROVED EQUAL	WHITE ACRYLIC COVER	BY ARCHITECT	FIELD CUTTABLE BALL SWIVEL STERN WITH 1.75" DEEP CANOPY. 99" AFF	LED: 5200 LUMENS 3500K	
P3	6" X 6" X 6" SQUARE PENDANT	ALW NOVA LARGE SQUARE PENDANT SERIES SPECTRUM C06115QXT SERIES NLS TCI SERIES OR PRIOR APPROVED EQUAL	HONEYCOMB LOUVER	SG SILVER GREY	FIELD ADJ. CABLE, RIGID/SWIVEL STERN 89" AFF	LED: 1000 LUMENS 3500K	
P4	4.5" X 12.2" ROUND PENDANT LIGHT	ALW CORE LX SERIES SPECTRUM CF0412PC SERIES LINDSLEY TULE SERIES VOIGT PRAGMATIC SERIES OR PRIOR APPROVED EQUAL	40 DEGREE REFLECTOR	SG SILVER GREY	ADJ. AIRCRAFT CABLE 8'-0" AFF NOTE 1	LED: 2000 LUMENS 3500K	
P5	ARC PENDANT	ALW CRESCENT MOONRING SERIES BETA CALCO SQUIGGLE SERIES FORUM ARC SERIES OR PRIOR APPROVED EQUAL	OPAL ACRYLIC LENS	GW GLOSS WHITE	ADJ. AIRCRAFT CABLE 127" AFF	LED: 4500 LUMENS 3500K	
P6	ARC PENDANT	ALW CRESCENT MOONRING SERIES BETA CALCO SQUIGGLE SERIES OR PRIOR APPROVED EQUAL	OPAL ACRYLIC LENS	BY ARCHITECT	ADJ. AIRCRAFT CABLE 127" AFF	LED: 5600 LUMENS 3500K	
W1	DECORATIVE SCONCE	OCL BAMBOO SERIES VISA CB6882 THEO SERIES OR PRIOR APPROVED EQUAL	GLOSS WHITE ACRYLIC	SILVER METALLIC	WALL-SURFACE	LED: 1400 LUMENS 3500K	
XA	SINGLE FACE EXIT	DUAL LITE CVD SERIES LITHONIA LE SERIES SURELITECX SERIES EVENLITE C00S SERIES	GREEN LETTERS "EXIT" AC ONLY	STENCIL FACE BRUSHED ALUMINUM	UNIVERSAL	LED	DIRECTION OF ARROWS AS INDICATED ON PLANS
XB	DOUBLE FACE EXIT						

NOTES:
1. TYPE P4 LIGHT FIXTURES ALONG CIRCULATION SHALL BE SUSPENDED TO 8'-0" AFF. THIS SHALL GOVERN THE HEIGHT OF ALL OTHER P4 FIXTURES.



VOL. II SAVANNAH ARTS ACADEMY ADDITION
500 WASHINGTON AVENUE
SAVANNAH, GEORGIA 31405
SAVANNAH-CHATHAM COUNTY PUBLIC SCHOOL SYSTEM
GMP CONSTRUCTION DOCUMENTS

FACILITY CODE: 1607
FTE: 1000
FUNDING: LOCAL EFFORT
BID NO#: C22-01

Cogdell Mendrala Architects
COGDELL & MENDRALA ARCHITECTS, PC
517 EAST CONGRESS STREET
SAVANNAH, GEORGIA 31401
tel 912.234.6318
fax 912.236.8414
cogdellmendrala.com

SEAL:

PROJECT CONSULTANTS:

CIVIL ENGINEER
MAXWELL-REDDICK & ASSOCIATES
40 JOE KENNEDY BLVD.
STATESBORO, GA 30458

STRUCTURAL ENGINEER:
SAUSSY ENGINEERING
400 E. JOHNNY MERCER BOULEVARD
SAVANNAH, GA 31410

MECHANICAL & ELECTRICAL ENGINEER:
DULOHERY WEEKS ENGINEERS
7402 HODGSON MEMORIAL DRIVE,
SUITE 100
SAVANNAH, GA 31406

KEY PLAN:

SHEET TITLE:
LIGHTING FIXTURE SCHEDULE & DETAILS

REVISION SCHEDULE	
DATE	DESCRIPTION
03/24/22	ADDENDUM #4

PROJECT NO: 1916
DATE: FEB 2022
DRAWN BY: PAA
SCALE: As indicated
SHEET: **EC0.02**